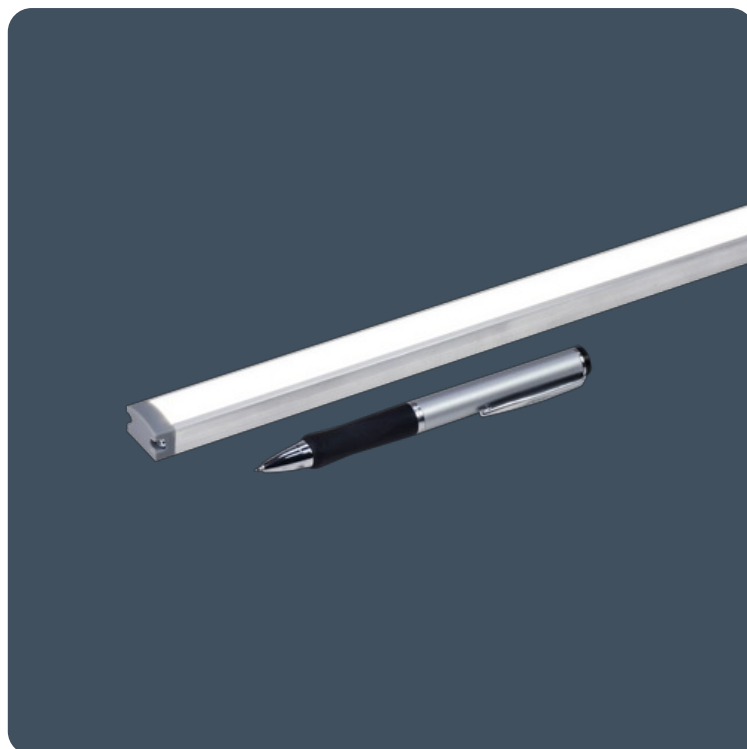


Low profile linear LED strip

Flexible LED strip supplied as a kit with anodised aluminium extrusion and opal polycarbonate diffuser, mounting clips and driver. Can be cut to length to suit the application.

Applications: accent lighting, galleries, pelmet lighting, reception areas.

- Kit contains self-adhesive flexible LED strip, anodised aluminium extrusion, opal polycarbonate diffuser and driver to make up to 4.8 m length
- Components can be selected separately to create bespoke solutions
- LEDs "binned" to 3-step MacAdam ellipse providing excellent colour uniformity



IP40

Up to 62.3 LL/CW

Specification

Mounting	Surface	IP rating	IP40
Nominal size	4.8 m		

Lighting

Optic	Opal diffuser	Efficacy	Up to 62.3 LL/CW
-------	---------------	----------	------------------

Power

LED power per metre	6.6 W - 14.9 W	Circuit power per metre	7.5 W - 16.6 W
---------------------	----------------	-------------------------	----------------

LED characteristics

CRI	80+	Colour temperature	3000 K 4000 K
Rated life (hours)	50 K - L70/B10		

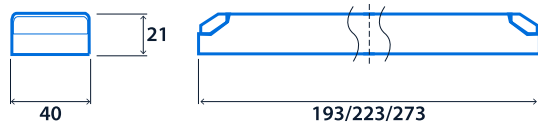
Compliance

UKCA	Yes	CE	Yes
Energy efficiency class	This product contains a light source of energy efficiency class E		

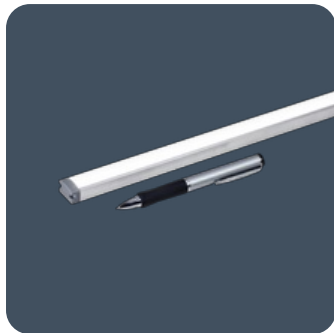
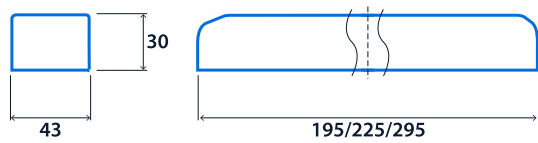
Dimensions



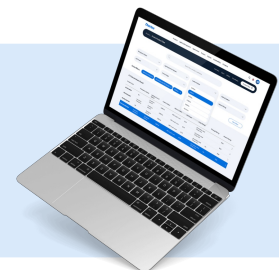
Remote gear unit - non-dimming version



Remote gear unit - DALI version



Click or scan here
View Tora variants using our online filtering tool



Information is correct as of 15-Jan-2025, however must not be interpreted as a guarantee of individual product performance and/or characteristics. We reserve the right to alter specifications and designs without prior notice.

