

High Dependency Linear

Recessed luminaires for high dependency/intensive care ward areas

Recessed luminaires with steel body and aluminium frame. Asymmetrical distribution to direct light towards the bed. Ultra low glare V-blade louvre set behind a clear polycarbonate cover.

Applications: high dependency / intensive care hospital wards.

- Asymmetrical distribution directs light towards bed
- Ultra low glare V-blade louvre set behind a clear polycarbonate cover
- Snap fix screw-less frame
- Supplied with side arm suspension kit
- Fits 24mm exposed T-bar ceilings (other ceiling type options available to special order)
- ColourControl versions available to special order

Notes: CRI 90 and ColourControl versions available to special order



IP54 (IP20 above ceiling)

86.9 LL/CW

Specification

Mounting	Recessed	IP rating	IP54 (IP20 above ceiling)
Nominal size	1200 x 150 mm		

Lighting

Optic	V-blade louvre	Lumen output	3,735 lm
Efficacy	86.9 LL/CW		

Emergency data

Emergency duration	3 hours	Battery specification	Nickel Metal Hydride (NiMH)
--------------------	---------	-----------------------	-----------------------------

Power

LED power	38 W	Circuit power	43 W
-----------	------	---------------	------

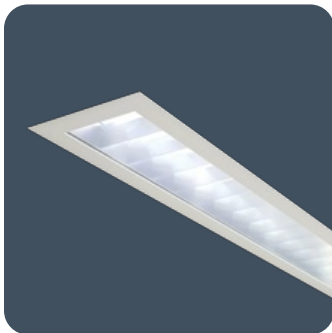
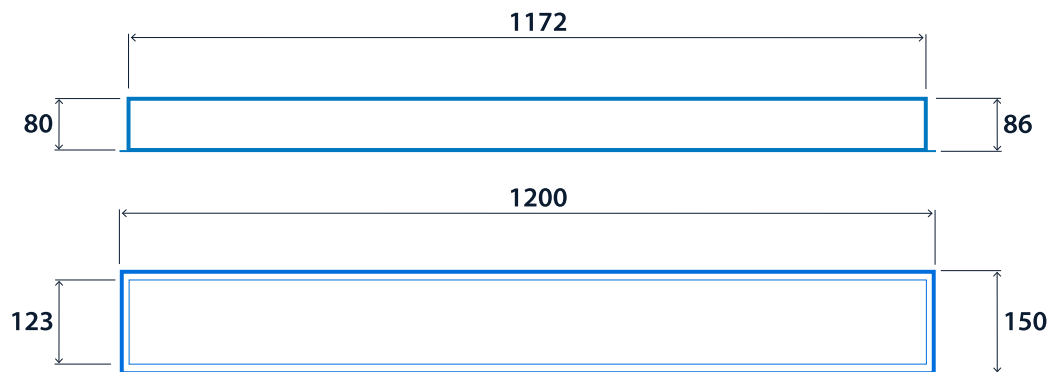
LED characteristics

CRI	80+	Colour temperature	4000 K
Rated life (hours)	70 K - L70/B10		

Compliance

UKCA	Yes	CE	Yes
Thermoplastic rating	TP(a)		

Dimensions



Click or scan here

View High Dependency Linear variants using our online filtering tool



High Dependency Linear



Information is correct as of 20-Jan-2025, however must not be interpreted as a guarantee of individual product performance and/or characteristics. We reserve the right to alter specifications and designs without prior notice.