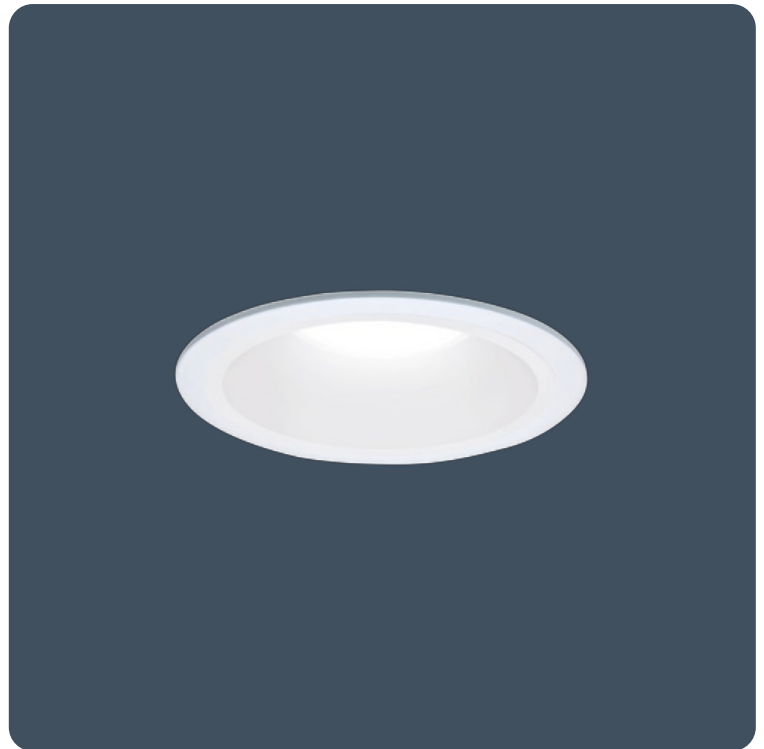


## Non-ferrous circular downlight for use in MRI rooms

Non-ferrous recessed downlighter luminaires for use in magnetic resonance imaging (MRI) rooms. Remote gear box and non-ferrous downlighter head designed specifically to meet the requirements of MRI rooms. Non-maintained emergency version also available.

Applications: MRI rooms.

- Non-ferrous construction, designed for use in MRI rooms
- Two output circuits per DALI gearbox where each circuit can power a minimum of 5 downlighter heads, up to a maximum of 8
- Downlighter wiring configured for low EMI when used with EMI filters (supplied by others)
- Emergency status indicator LED can be remotely mounted outside of the room
- DALI dimmable control gear as standard. Can be used with push to make retractive switch for dimming and switching



IP20

133.3 LL/CW

### Specification

IP rating	IP20
-----------	------

### Lighting

Lumen output	1,600 lm	Efficacy	133.3 LL/CW
--------------	----------	----------	-------------

### Emergency data

Emergency lumen output	800 lm	Emergency type	Non-maintained
Emergency duration	3 hours	Battery specification	Nickel Metal Hydride (NiMH)

### Power

LED power	6 W - 11 W	Circuit power	12 W
-----------	------------	---------------	------

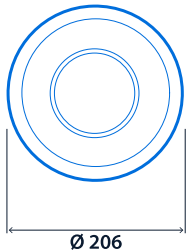
### LED characteristics

CRI	80+	Colour temperature	4000 K
Rated life (hours)	100 K - L80/B10		

## Compliance

UKCA Yes CE Yes

## Dimensions

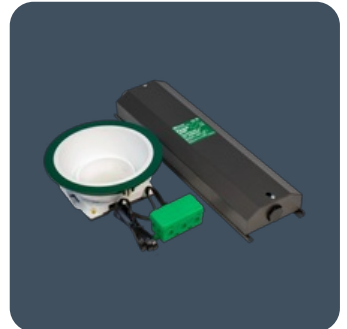
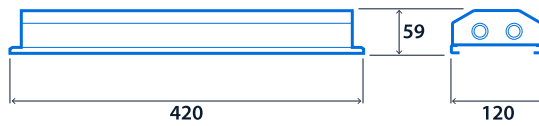


Cut-out -  $\varnothing$  180  
Minimum void depth - 110

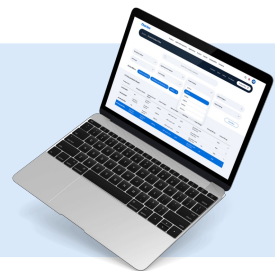
### LED Downlighter Power Unit



### Emergency LED Downlighter Power Unit



**Click or scan here**  
View G3 MRI variants using  
our online filtering tool



Information is correct as of 22-Jan-2025, however must not be interpreted as a guarantee of individual product performance and/or characteristics. We reserve the right to alter specifications and designs without prior notice.