

DIALux

Database Update Guide



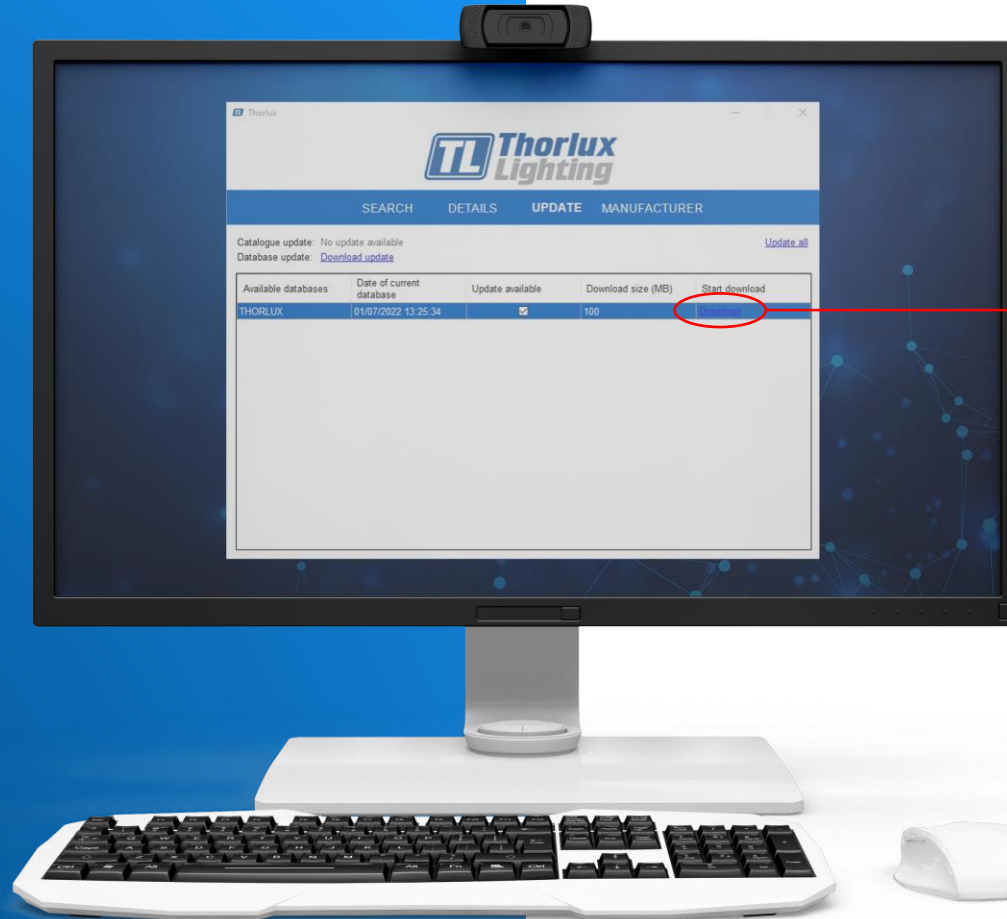
To check if you are running the latest version of the database, please open the Thorlux Catalogue.



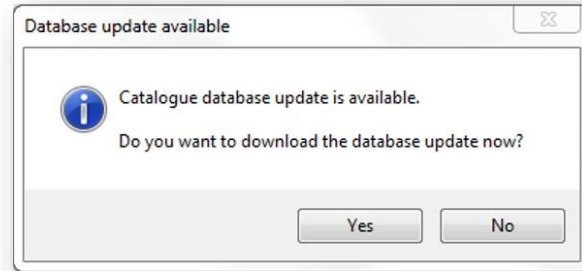
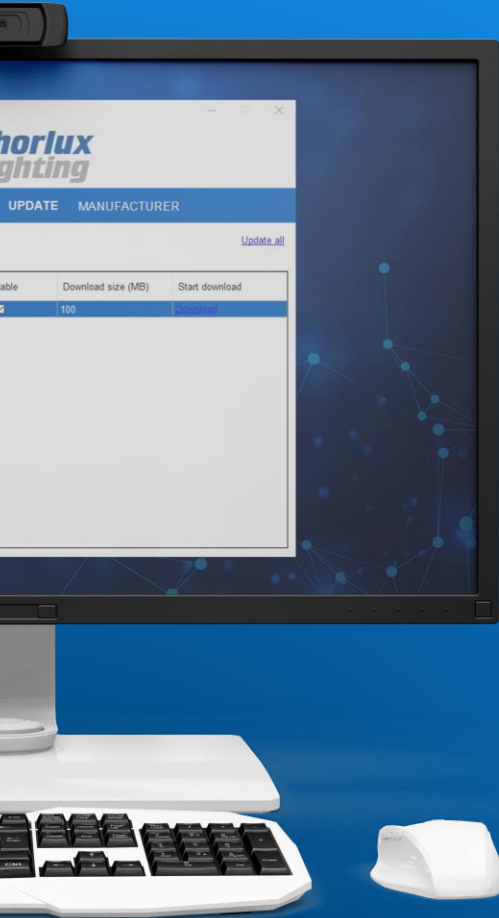
If an exclamation mark is displayed within the 'update' tab, this means a newer version of the database is available.



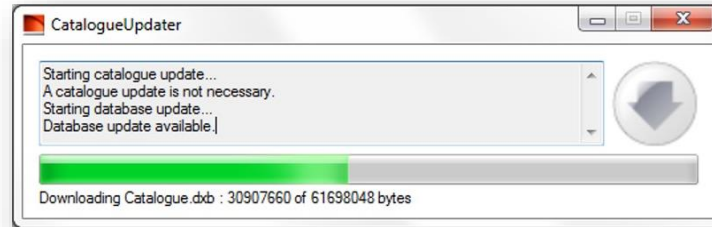
To update, click on the 'update' tab.



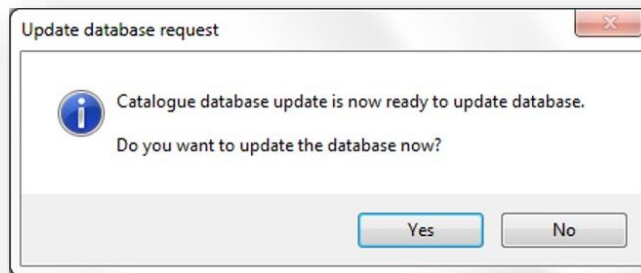
To start the update, click on the 'Download' link.



This message box will appear, click 'Yes'.



The status box will show the download progress.



Once downloaded this box will appear, click 'Yes'.

When finished the database will automatically open and the process is complete.





Designers, manufacturers and suppliers
of professional lighting systems since 1936

www.thorlux.com

